

■ Features

- Universal input 90~264VAC, 47~63Hz
- High efficiency up to 80%
- Continuous short circuit protection
- Over load protection
- Over voltage protection
- Low standby power consumption 0.05W
- 3750 VAC isolation voltage

Application:

1. Industry control application
2. AC motor control application

■ Selection Guide

Part number	Input voltage	Output voltage	Output current @full load	Efficiency* typ.	Capacitive Load* max.
L4A06-3.3	90-264VAC	3.3 VDC	1500 mA	70%	15000uF
L4A06-05		5 VDC	1200 mA	75%	6800uF
L4A06-12		12 VDC	500 mA	79%	2500uF
L4A06-24		24 VDC	250 mA	80%	1400uF

* The efficiency measured at full load at 115VAC/230VAC after warm-up.

* The capacitive load measured at full load at 115VAC, Ta=25°C with constant resistant mode.

* The product information and specifications are subject to change without prior notice.

* All specifications valid at nominal input voltage 115 and 230VAC, full load and 25°C after warm-up time unless otherwise stated.

L 4 A 0 6 - 05

|
Output voltage

■ Specifications

Parameter	Conditions	Min.	Typ.	Max.	Unit
Input					
Input voltage range	See derating curve	90		264	VAC
Input frequency	For AC input	47		63	Hz
Inrush current	115VAC			20	A
(cold start @25°C)	230VAC			40	A
Start-up time				1	S
No load power consumption				0.05	W
External fuse (or internal)				Internal wire wound resistor	

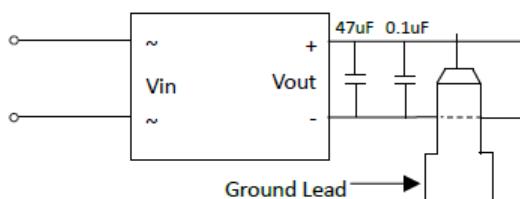
Parameter	Conditions	Min.	Typ.	Max.	Unit
Output					
Output voltage tolerance*				±6	%
Ripple & noise*	BW 20MHz limit		100	130	mVp-p
Hold up time	115VAC		8		ms
	230VAC		72		ms
Minimum load		0			%
Line regulation				±1.5	%
Load regulation	10%-100% load			±2	%
Leakage current	264VAC			0.25	mA
Operating frequency			80		KHz
Environment					
Operating temperature	With derating	-25		85	°C
Storage temperature		-25		85	°C
Relative humidity				95	%RH
Vibration			MIL-STD-202G		
Function					
Isolation voltage	1 minute, Pri to Sec cut-off current: 5mA	3750			VAC
Isolation capacitance			1100		pF
Isolation resistance	DC 500V	1			gΩ
MTBF (MIL-HDBK-217F)	115VAC @25°C		1800		KHours
Short circuit protection			Continuous, Automatic recovery		
Over load protection			Automatic recovery		
Over voltage protection			Zener diode clamp		
Safety			Meet 60950/60335-1		
Physical					
Dimension	(L x W x H)		40.0 x 33.5 x 22.0 mm		
Case material			UL94V-0 black plastic		
Potting material			Silicone		
Weight			38.0		g
EMC					
EMI	EN55032		Class B		
ESD	IEC 61000-4-2		Criteria A		
EFT	IEC 61000-4-4		Criteria A		
Surge	IEC 61000-4-5		Criteria A		

*The "output voltage tolerance" includes initial voltage accuracy, thermal drift, line regulation and load regulation at rated input voltage and load conditions.

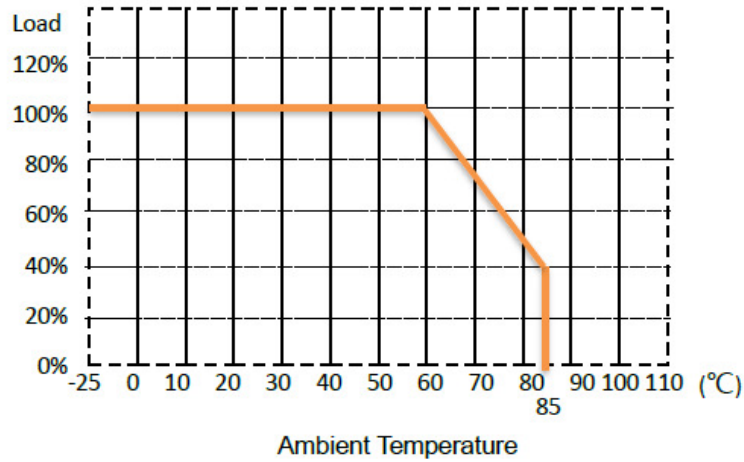
**"Ripple and Noise" is test with E-Cap 47uF low ESR and 0.1uF MLCC across outputs at 20MHz bandwidth.

*The product information and specifications are subject to change without prior notice.

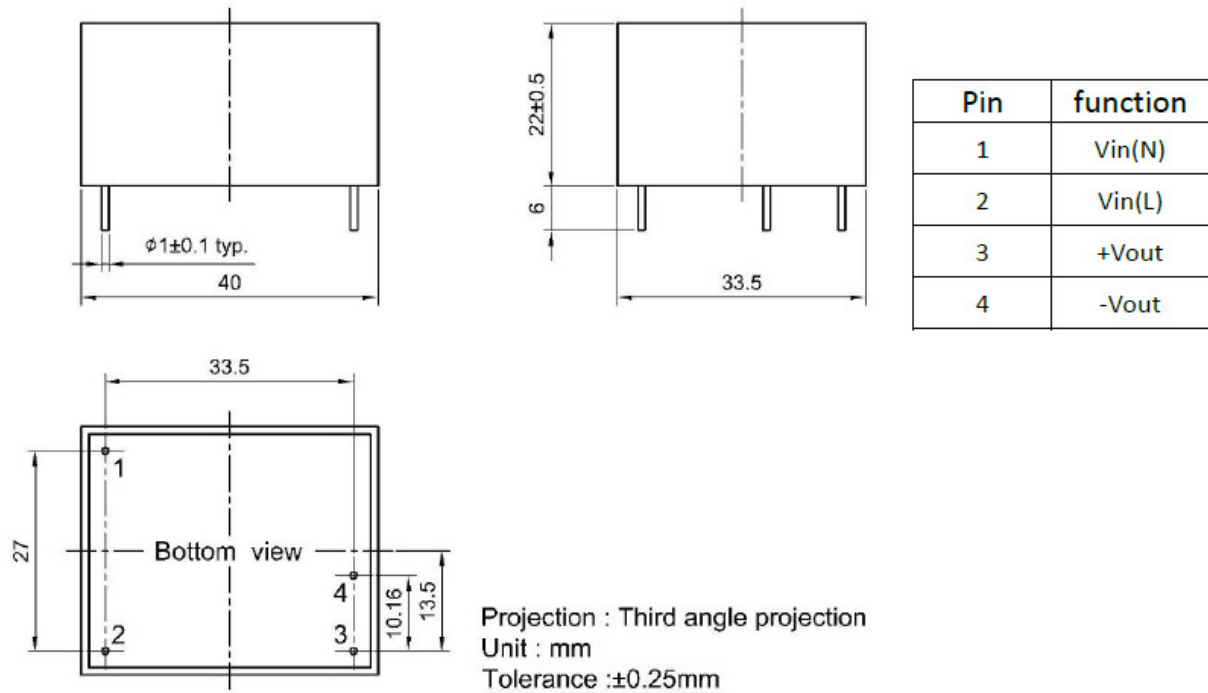
■ Ripple & Noise measure method



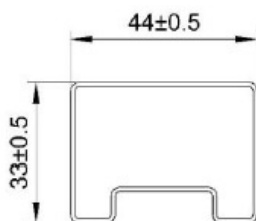
■ **Derating Curve**



■ **Mechanical Dimension & Pinning**



■ **Package**



UNIT:mm
1 Tube = 14 pcs
Length:520±2mm